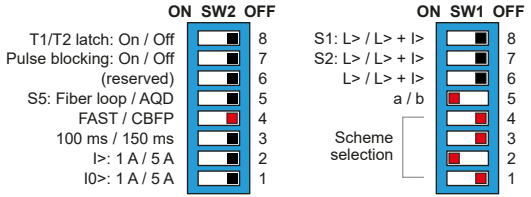


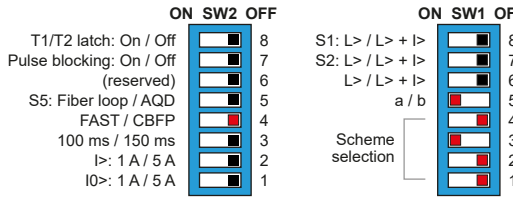
AQ-110P SS:2a



SS:2a		OUTPUTS				
INPUTS	S1	T1	T2	HSO1	HSO2	AQD
	S1	x <sup>1</sup>	x <sup>1</sup>		CBFP <sup>1</sup>	
	S2	x <sup>1</sup>	x <sup>1</sup>		x <sup>1</sup>	x <sup>2</sup>
	S3,S4,S5	x <sup>1</sup>	CBFP <sup>1</sup>		x <sup>1</sup>	x <sup>2</sup>
	Text> (BI2)	x <sup>1</sup>	CBFP <sup>1</sup>		x <sup>1</sup>	x <sup>2</sup>
	Text> (BI1)			x		
	I> (phase currents)			x		
	I0> (residual current)			x		

- 1) Activates only if channel has been set to light only mode or if any overcurrent signal (I>, I0> or BI1) is ON.
- 2) Activates only if phase overcurrent signal (I>) is ON.

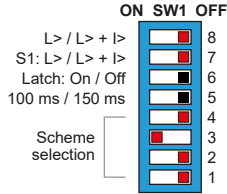
AQ-110P SS:4a



SS:4a		OUTPUTS			
INPUTS	S1	T1	T2	BO1	HSO1
	S1	x <sup>1</sup>	x <sup>1</sup>	CBFP <sup>1</sup>	
	S2	x <sup>1</sup>	x <sup>1</sup>	x	
	S3,S4,S5	x <sup>1</sup>	CBFP <sup>1</sup>	x	
	Master trip (BI1)	x	CBFP <sup>2</sup>		
	I> (phase currents)				x
	I0> (residual current)				x

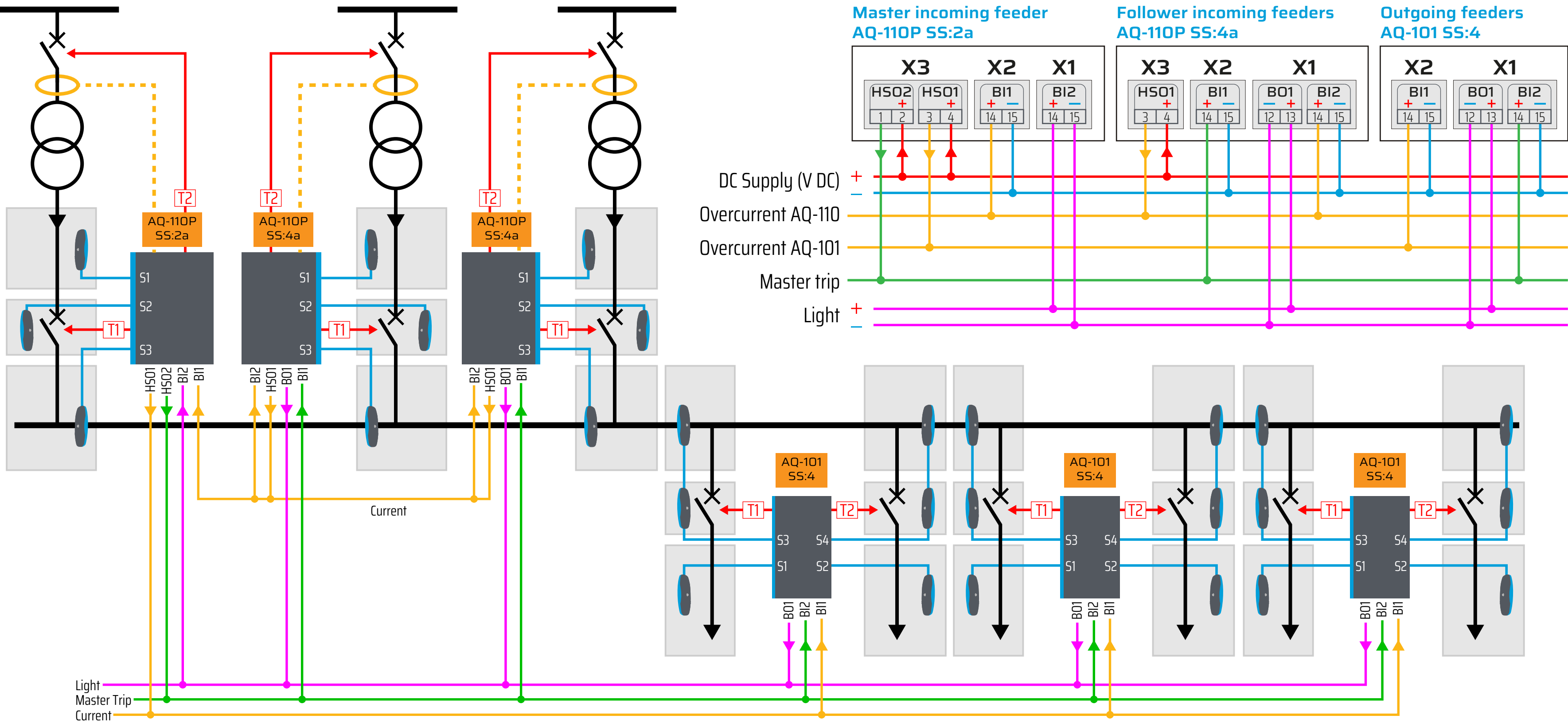
- 1) Activates only if channel has been set to light only mode or if any overcurrent signal (I>, I0> or BI2) is ON.
- 2) Activates only if any overcurrent signal (I>, I0> or BI2) is ON.

AQ-101 SS:4

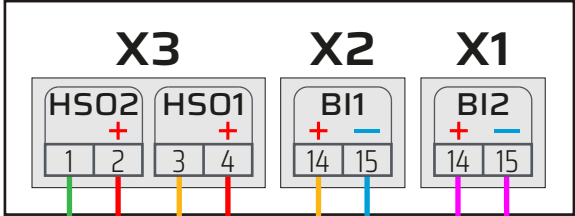


SS:4		OUTPUTS		
INPUTS	S1	T1	T2	BO1
	S1	x <sup>1</sup>		CBFP
	S2		x <sup>1</sup>	CBFP
	S3, S4, S5			x
	Master Trip (BI2)	x	x	

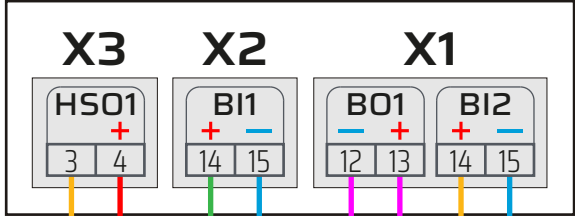
- 1) Activates only if channel has been set to light only mode or overcurrent signal (BI1) is ON.



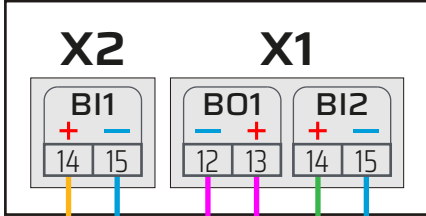
Master incoming feeder  
AQ-110P SS:2a



Follower incoming feeders  
AQ-110P SS:4a



Outgoing feeders  
AQ-101 SS:4



DC Supply (V DC) +  
-  
Overcurrent AQ-110  
Overcurrent AQ-101  
Master trip  
Light +  
-